

Mixed to Fraction Test Answers

Name _____

The sentence should show the original example and the mixed number.

1. Mixed Form to Fraction Form.

$$1 \frac{5}{8} = \frac{1 \times 8 + 5}{8} = \frac{13}{8}$$

2. Mixed Form to Fraction Form.

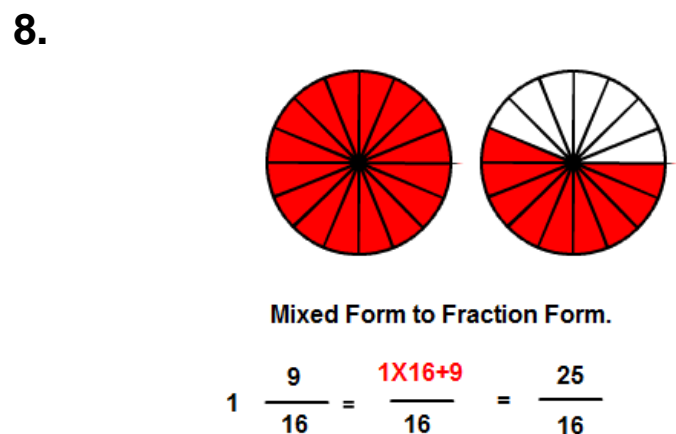
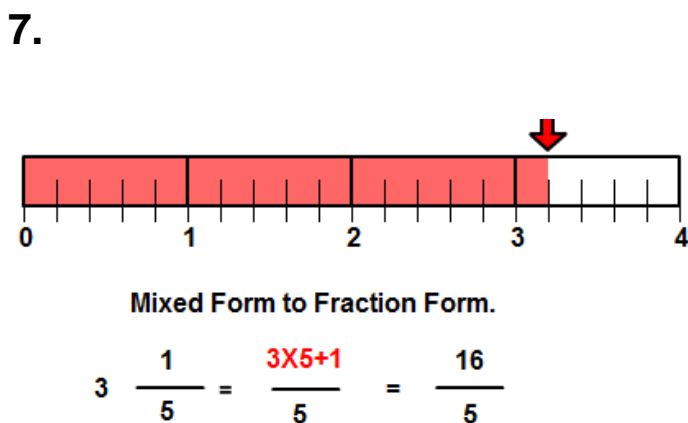
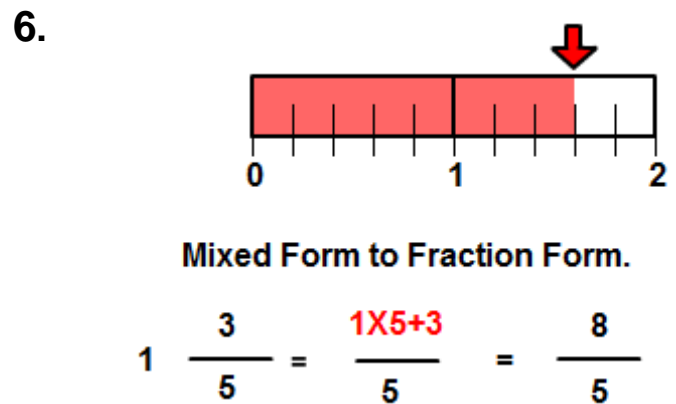
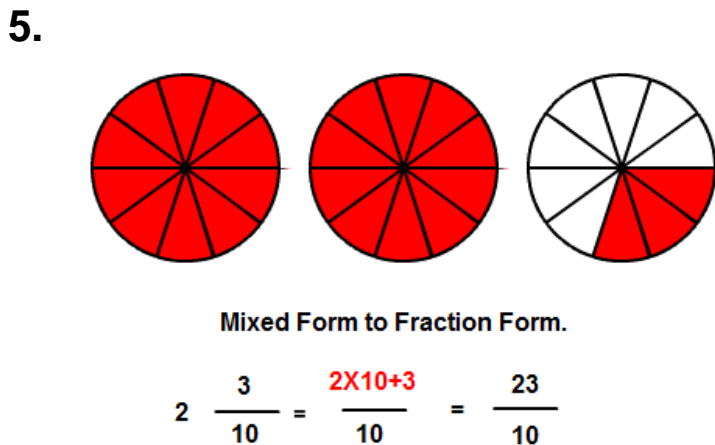
$$2 \frac{3}{16} = \frac{2 \times 16 + 3}{16} = \frac{35}{16}$$

3. Mixed Form to Fraction Form.

$$1 \frac{6}{7} = \frac{1 \times 7 + 6}{7} = \frac{13}{7}$$

4. Whole Number Form to Fraction Form.

$$2 = \frac{2 \times 8 + 0}{8} = \frac{16}{8}$$



9.

$$3 \frac{3}{8} = \frac{27}{8}$$

10.

$$2 \frac{9}{10} = \frac{29}{10}$$