

Subtract Fractions Pretest Answers

Name _____

The number sentence should show minuend, the subtrahend, and the difference..

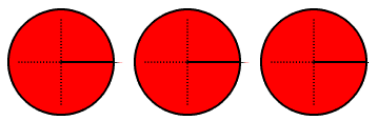
1. $2 \frac{2}{3} - 1 \frac{1}{3} = 1 \frac{1}{3}$


2. $3 \frac{7}{8} - 2 \frac{5}{8} = 1 \frac{1}{4}$

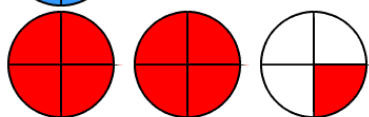
3. $4 \frac{2}{3} - 2 \frac{1}{6} = 2 \frac{1}{2}$

4. $5 \frac{5}{9} - 2 \frac{1}{3} = 3 \frac{2}{9}$

5.

minuend 

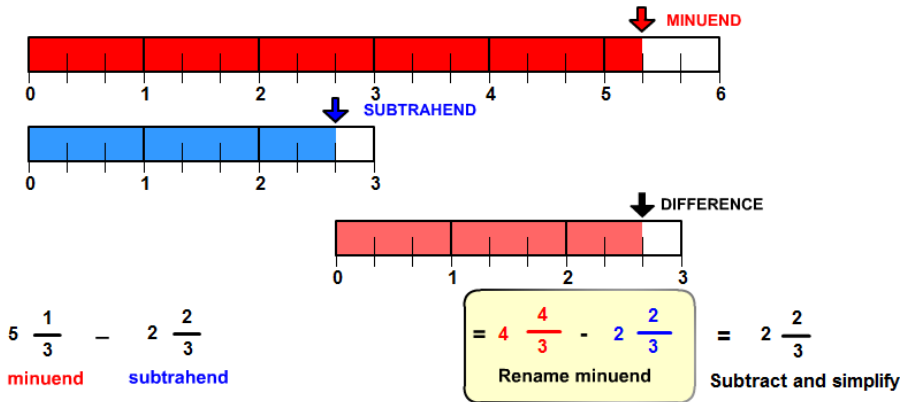
subtrahend 

difference 

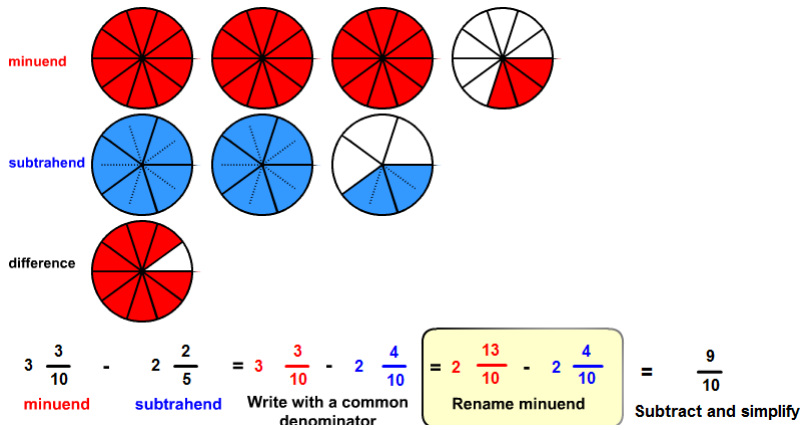
$3 - \frac{3}{4} = 3 - \frac{3}{4} = 2 \frac{4}{4} - \frac{3}{4} = 2 \frac{1}{4}$

minuend subtrahend Write with a common denominator Rename minuend Subtract and simplify

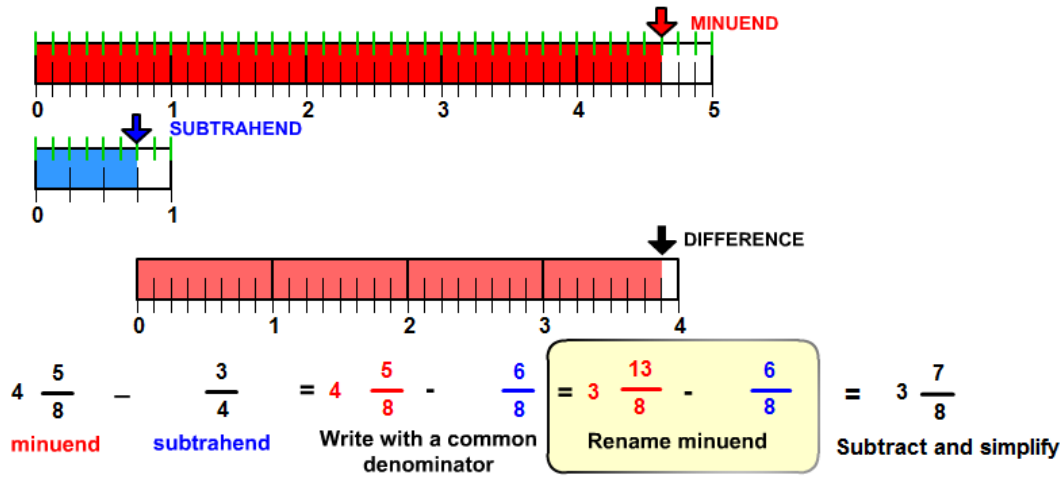
6.



7.



8.



9.

$$3 \frac{3}{4} - 1 \frac{3}{8} = 2 \frac{3}{8}$$

10.

$$4 \frac{1}{4} - 1 \frac{7}{8} = 2 \frac{3}{8}$$